

Ready to
plant
garden kits!

VINLAND VALLEY NURSERY



PREPARE THE GARDEN BED IN JANUARY—APRIL FOR LATE APRIL/EARLY MAY PLANTING.

1. Choose a location that receives at least 6 hours of direct sunlight every day in summer. Remember that trees will leaf out and throw shade in summer.
2. Mark the outline of the bed by stepping off the dimensions shown. Use flags and a hose if needed.
3. Remove existing plants and turf.
4. Add a 1-3" layer of compost —gardens with lots of clay will need 3" while beds with better soil will need less.
5. Arrange a layer of cardboard or thick layers of newsprint over the entire bed. Overlap edges to cover all soil. This will keep weeds down while new plants are growing.
6. Add 3-4" of mulch. Avoid cedar mulch as it repels pollinators and other beneficial insects this garden is meant to support.
7. Thoroughly water the entire bed to moisten cardboard, then water periodically as needed and when weather allows to soften the cardboard. Then in spring —
8. Pick up your tray of 18 plants at Vinland Valley Nursery!
9. Set out plants according to the map being sure to leave space according to the mature spread of each plant. Nothing should be closer than 1 foot to the edge of the bed.
10. When plants are set, begin planting by digging through the layer of mulch and cutting through the cardboard to ensure the roots of the plants are in contact with the soil beneath.
11. Water everything in thoroughly.
12. Familiarize yourself with plant foliage. Take pictures to keep on your phone for easy reference. Then watch for weeds and remove them as needed.
13. Water plants regularly until established and during periods of drought. New plantings should be watered 2-3x weekly.
Watch for caterpillars on host plants!

CUTTING GARDEN

We'll select a combination to supply eye-catching bouquets with long vase life.

YOUR TRAY WILL INCLUDE 3 POTS OF ONE OF THE FOLLOWING

Basil 'Dark Opal'
Basil 'Genovese'
Eucalyptus 'Silver Dollar'

YOUR TRAY WILL INCLUDE 9 POTS /THREE OF THREE FROM THE FOLLOWING

Amaranth 'Hot Biscuits'
Celosia 'Chief Mix'
Celosia 'Sylphid'
Celosia 'Celway Terracotta'
Celosia 'Flamingo Feather'
Celosia 'Dragon's Breath'
Celosia 'Sunday Mix'
Cosmos 'Cupcake Mix'
Cosmos 'Choca Mocha'
Cosmos 'Apricot Lemonade'
Cosmos 'Picotee'
Cosmos 'Xsenia'
Cosmos 'Versailles'
Cosmos 'Double Click Mix'
Baby's Breath 'Covent Garden Mix'
Statice 'Johnny's Formula Mix'
Strawflower 'Monstrosom Tall Mix'
Gomphrena 'QIS Mix'
Ageratum 'Blue Horizon'
Daucus Dara 'Queen Anne's Lace'
Scabiosa 'Pincushion Formula Mix'

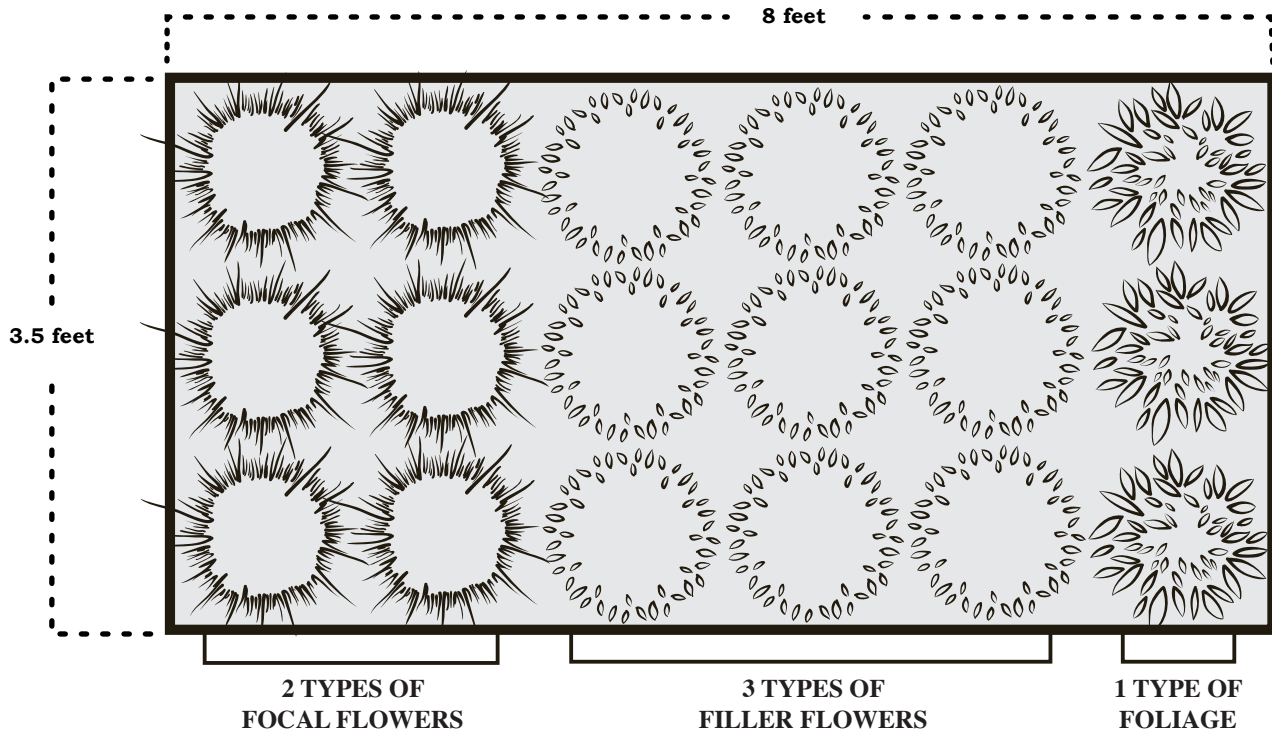
YOUR TRAY WILL INCLUDE 6 POTS /TWO OF TWO FROM THE FOLLOWING

China Aster 'Tower Blue'
China Aster 'King Sized Apricot'
China Aster 'Valkyrie Mix'
Zinnia 'Oklahoma Carmine'
Zinnia 'Oklahoma Scarlet'
Zinnia 'Oklahoma White'
Zinnia 'Oklahoma Pink'
Zinnia 'Oklahoma Salmon'
Zinnia 'Queeny Lemon Peach'
Zinnia 'Queeny Lime Orange'
Zinnia 'Queeny Lime Red'
Zinnia 'Queeny Lime Blush'
Zinnia 'Zinderella Peach'
Zinnia 'Pop Art Redd and White'
Zinnia 'Zowie! Yellow Flame'
Zinnia 'Benary Giant Mix'
Zinnia 'Cactus Mix'

785.594.2966
1606 N 600 RD • BALDWIN, KS 66006

PLANT A CUTTING GARDEN

GROW YOUR OWN COLORFUL BOUQUETS ALL SUMMER!



PROLONG THE VASE LIFE OF YOUR FRESH CUT FLOWERS BY ...

- cutting at a 45° angle with sharp scissors, pruning shears or a knife. The angle increases the surface area for water absorption.
 - cutting the stems underwater to prevent air from blocking the stem's water-conducting tissues.
 - cutting flowers in the morning when they are full of water from rehydrating overnight.
- removing leaves that will be below the water line. Decaying leaves can create an environment for bacteria and fungi that can harm the flower.
 - cleaning the vase with a bleach solution and rinse thoroughly.
 - replacing water with clean, cold water every day.
- adding a solution of sugar and vinegar or baking soda to the water to feed the flowers and prevent bacteria.
 - choosing flowers that are just beginning to open, like roses with one petal unfurled.
 - avoiding placing flowers near heaters, warm drafts, or drying air.