

VINLAND VALLEY NURSERY



Ready to
plant
garden kits!

WOODLAND NATIVE GARDEN

We'll select a combination that is colorful from spring through fall.

PREPARE THE GARDEN BED IN JANUARY—APRIL FOR LATE APRIL/EARLY MAY PLANTING.

1. Choose a location that receives little to no direct sunlight each day in summer. Any exposure should be limited to morning when the sun is less intense and temperatures are cooler.
2. Mark the outline of the bed by stepping off the dimensions shown. Use flags and a hose if needed.
3. Remove existing plants and turf.
4. Add a 1-3" layer of compost—gardens with lots of clay will need 3" while beds with better soil will need less.
5. Arrange a layer of cardboard or thick layers of newsprint over the entire bed. Overlap edges to cover all soil. This will keep weeds down while new plants are growing.
6. Add 3-4" of mulch. Avoid cedar mulch as it repels pollinators and other beneficial insects this garden is meant to support.
7. Thoroughly water the entire bed to moisten cardboard, then water periodically as needed and when weather allows to soften the cardboard. Then in spring—
8. Pick up your tray of 15 native plants at Vinland Valley Nursery!
9. Set out plants according to the map being sure to leave space according to the mature spread of each plant. Nothing should be closer than 1 foot to the edge of the bed.
10. When plants are set, begin planting by digging through the layer of mulch and cutting through the cardboard to ensure the roots of the plants are in contact with the soil beneath.
11. Water everything in thoroughly.
12. Familiarize yourself with plant foliage. Take pictures to keep on your phone for easy reference. Then watch for weeds and remove them as needed.
13. Water plants regularly until established and during periods of drought. New plantings should be watered 2-3x weekly for the first 6 weeks. Perennials will take about 3 years to fully realize their potential. **The rule of thumb is the first year they sleep, second year they creep, third year they leap!**

YOUR TRAY WILL INCLUDE 3 POTS OF ONE OF THE FOLLOWING

A — LESS THAN 8 INCHES

Walter's blue violet
(*Viola walteri*)

blue blooms in spring

Birdsfoot violet
(*Viola pedata*)

purple blooms in spring

Labrador violet
(*Viola labradorica*)

purple blooms in spring

Dwarf crested iris
(*Iris cristata*)

blue blooms in spring

YOUR TRAY WILL INCLUDE 3 POTS OF ONE OF THE FOLLOWING

B — 8-12 INCHES

Pennsylvania Sedge
(*Carex pensylvanica*)

soft grass all season

Wild Ginger

(*Asarum canadense*)

red blooms in spring

Heartleaf foamflower
(*Tiarella cordifolia*)

white blooms in summer

YOUR TRAY WILL INCLUDE 3 POTS OF ONE OF THE FOLLOWING

C — 12-18 INCHES

Wild sweet William
(*Phlox divaricata*)

blue blooms in spring

Wood poppy

(*Stylophorum diphyllum*)

yellow blooms in spring

Virginia bluebells
(*Mertensia virginica*)

blue blooms in spring

Ohio spiderwort

(*Tradescantia ohioensis*)

blue blooms in summer

YOUR TRAY WILL INCLUDE 3 POTS OF ONE OF THE FOLLOWING

D — 18-24 INCHES

Jack-in-the-pulpit
(*Arisaema triphyllum*)

green blooms in spring

Richardson's alumroot
(*Heuchera richardsonii*)

white blooms in spring

Jacob's ladder

(*Polemonium reptans*)

blue blooms in spring

Large-flowered bellwort
(*Uvularia grandiflora*)

yellow blooms in spring

Christmas fern

(*Polystichum acrostichoides*)

Sensitive fern

(*Onoclea sensibilis*)

Fringed loosestrife

(*Lysimachia ciliata*)

yellow blooms in summer

YOUR TRAY WILL INCLUDE 3 POTS OF ONE OF THE FOLLOWING

E — 24-36 INCHES

Columbine

(*Aquilegia canadensis*)

yellow/red blooms in spring

Early meadow rue

(*Thalictrum dioicum*)

purple blooms in spring

Bowman's root

(*Gillenia trifoliata*)

white blooms in summer

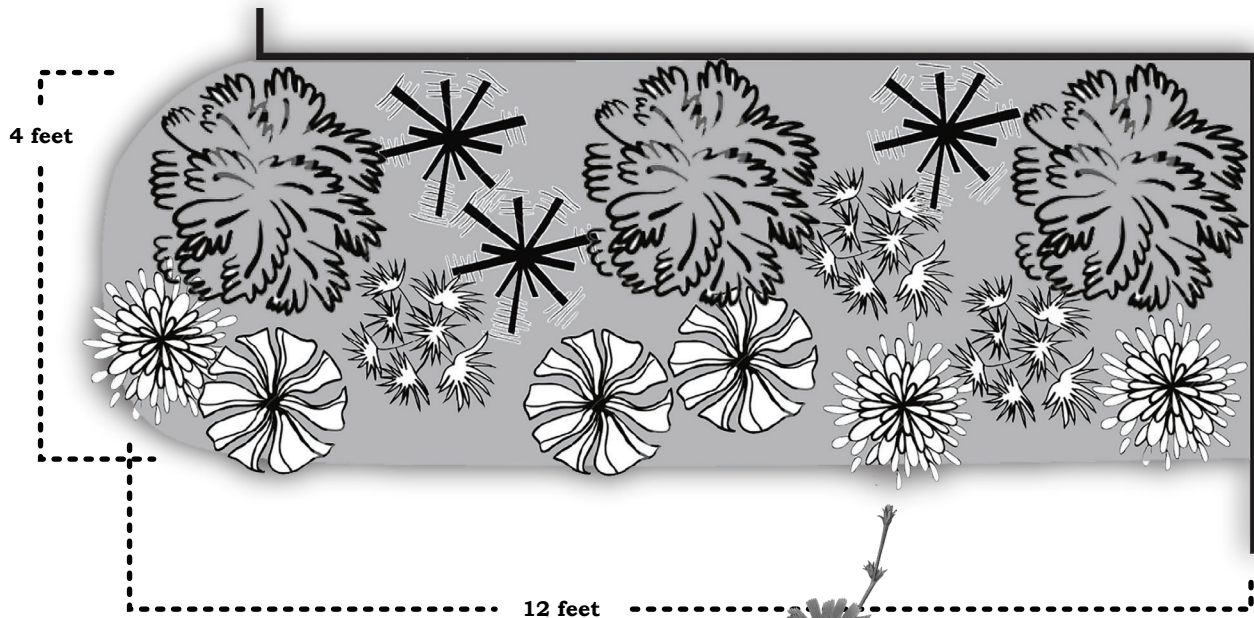
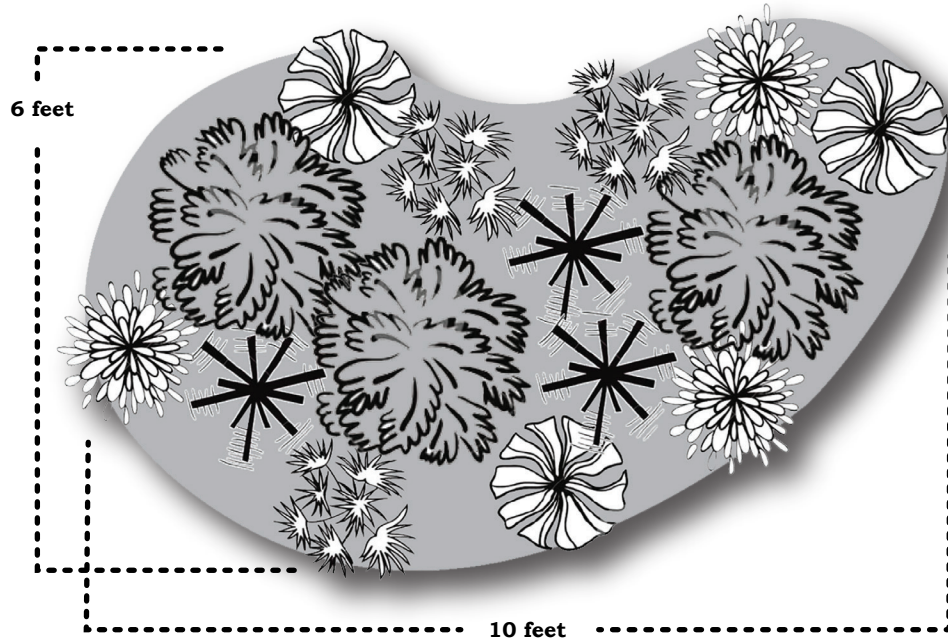
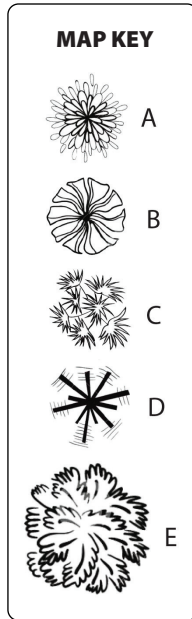
* Leave foliage and dried seed heads in winter for garden interest and to provide habit for hibernating caterpillars and native bees.



785.594.2966
1606 N 600 RD • BALDWIN, KS 66006

PLANT AN ISLAND OR FOUNDATION NATIVE PERENNIAL GARDEN

PROVIDE FOOD & SHELTER FOR BUTTERFLIES & OTHER WILDLIFE!



YOU MIGHT ADD ...

- a stump or large branch
- a sign designating your garden pesticide free
- a birdbath
- flowering annuals to fill gaps and add color during the first year
- a birdhouse or two on posts (avoid bird feeders since spilled birdseed will germinate)



GET ON THE MAP

Start a new HABITAT™

HOMEGROWN
NATIONAL PARK

LINK AT
VINLANDVALLEYNURSERY.COM

Every garden counts! If we each do what we can, we'll make a difference.