

VINLAND VALLEY NURSERY



Ready to
plant
garden kits!

PREPARE THE GARDEN BED IN JANUARY—APRIL FOR LATE APRIL/EARLY MAY PLANTING.

1. Choose a location that receives at least 6 hours of direct sunlight every day in summer. Remember that trees will leaf out and throw shade in summer.
2. Mark the outline of the bed by stepping off the dimensions shown. Use flags and a hose if needed.
3. Remove existing plants and turf.
4. Add a 1-3" layer of compost—gardens with lots of clay will need 3" while beds with better soil will need less.
5. Arrange a layer of cardboard or thick layers of newsprint over the entire bed. Overlap edges to cover all soil. This will keep weeds down while new plants are growing.
6. Add 3-4" of mulch. Avoid cedar mulch as it repels pollinators and other beneficial insects this garden is meant to support.
7. Thoroughly water the entire bed to moisten cardboard, then water periodically as needed and when weather allows to soften the cardboard. Then in spring—
8. Pick up your tray of 18 plants at Vinland Valley Nursery!
9. Set out plants according to the map being sure to leave space according to the mature spread of each plant. Nothing should be closer than 1 foot to the edge of the bed.
10. When plants are set, begin planting by digging through the layer of mulch and cutting through the cardboard to ensure the roots of the plants are in contact with the soil beneath.
11. Water everything in thoroughly.
12. Familiarize yourself with plant foliage. Take pictures to keep on your phone for easy reference. Then watch for weeds and remove them as needed.
13. Water plants regularly until established and during periods of drought. New plantings should be watered 2-3x weekly.
Watch for caterpillars on host plants!

POLLINATOR GARDEN

*We'll select a combination to attract
swallowtail and monarch butterflies at all stages!*

YOUR TRAY WILL INCLUDE 6 POTS OF TWO OF THE FOLLOWING

A/B — 8-12 INCHES

**Pentas 'Butterfly' mix
Zinnia 'Profusion' mix
Parsley, flat leaf
Parsley, curly**

YOUR TRAY WILL INCLUDE 6 POTS OF TWO OF THE FOLLOWING

C/D — 12-24 INCHES

**Zinnia 'Red spider'
Cosmos 'Sonata' mix
Cosmos 'Cosmic' mix
Celosia 'Flamingo Purple'
Bronze Leaf Fennel
Green Fennel
Rue**

YOUR TRAY WILL INCLUDE 6 POTS OF TWO OF THE FOLLOWING

E/F — 24-48 INCHES

**Tropical milkweed 'Silky Red'
Tropical milkweed 'Silky Gold'
Dara
Tall verbena
Lantana "Miss huff"
Mexican sunflower 'Goldfinger'**

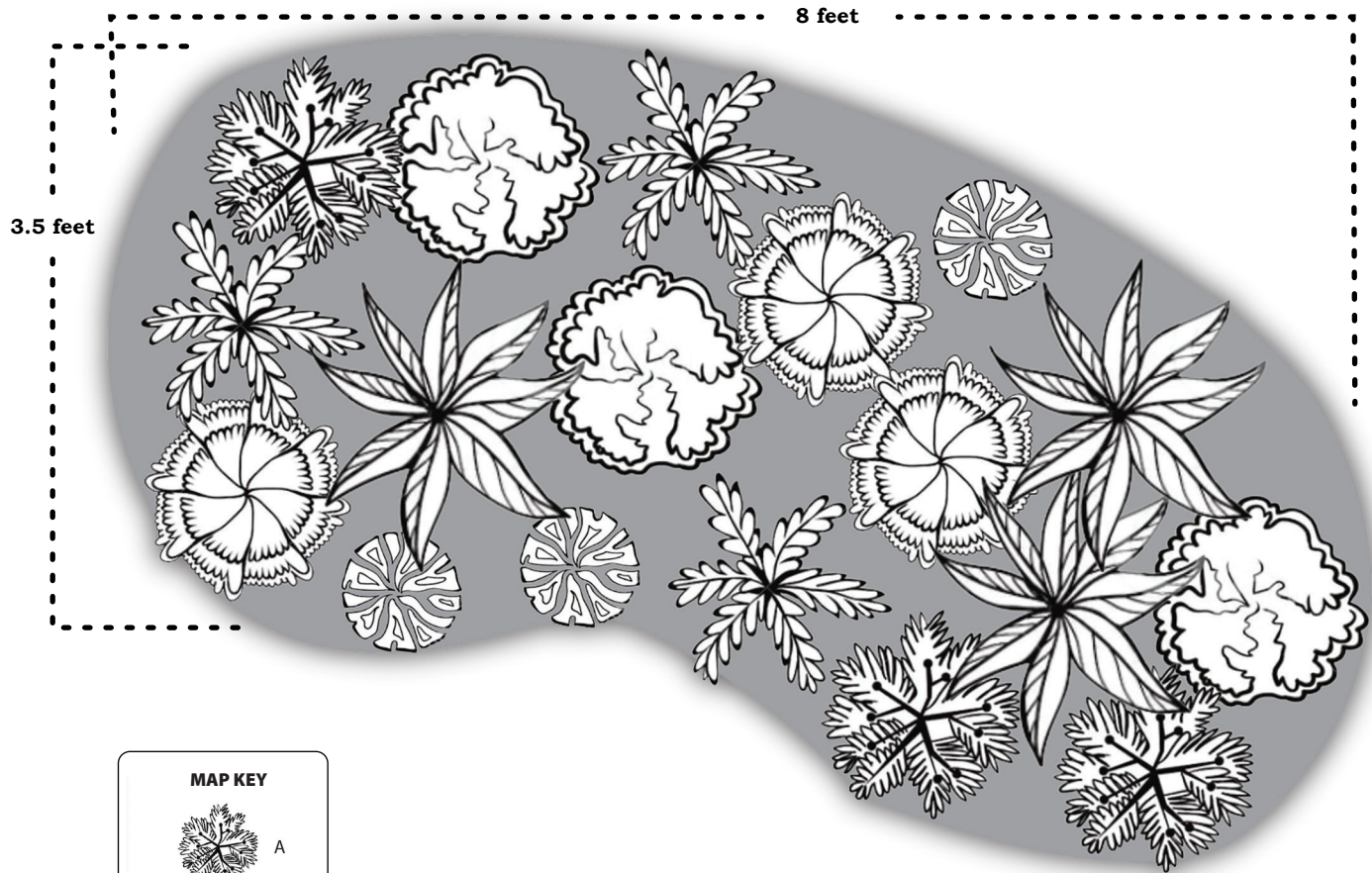


* Leave foliage and dried seed heads in winter for garden interest and to provide habit for hibernating caterpillars and native bees.

785.594.2966
1606 N 600 RD • BALDWIN, KS 66006

PLANT AN ISLAND POLLINATOR GARDEN

PROVIDE FOOD & SHELTER FOR BUTTERFLIES & OTHER WILDLIFE!



MAP KEY



A



B



C



D



E



F

YOU MIGHT ADD ...

- a stump or large branch
- a sign designating your garden pesticide free
- shallow water dishes with pebbles for butterflies to drink
- perennial caterpillar host plants that will grow into spaces between the annuals and become a year round butterfly habitat!



ADDITIONAL BUTTERFLY & POLLINATOR GARDEN RESOURCES

AVAILABLE AT
VINLANDVALLEYNURSERY.COM/
GARDENS-FOR-WILDLIFE

Every garden counts! If we each do what we can, we'll make a difference.